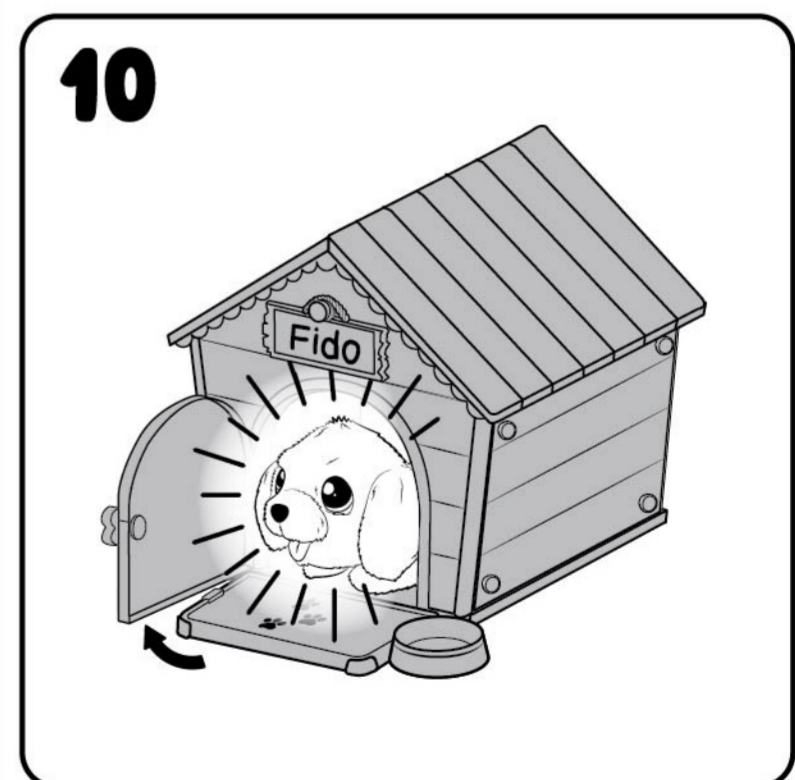
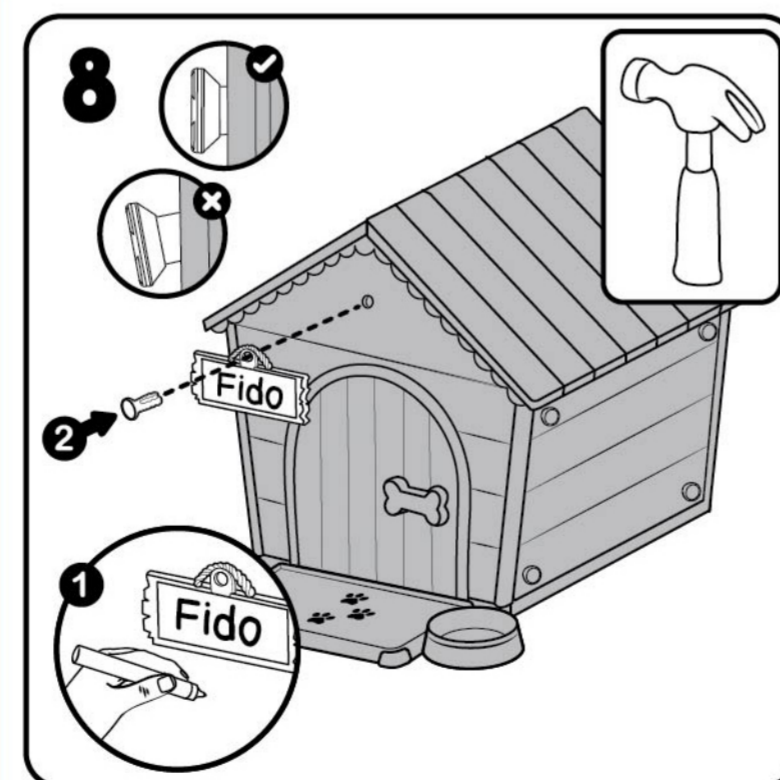
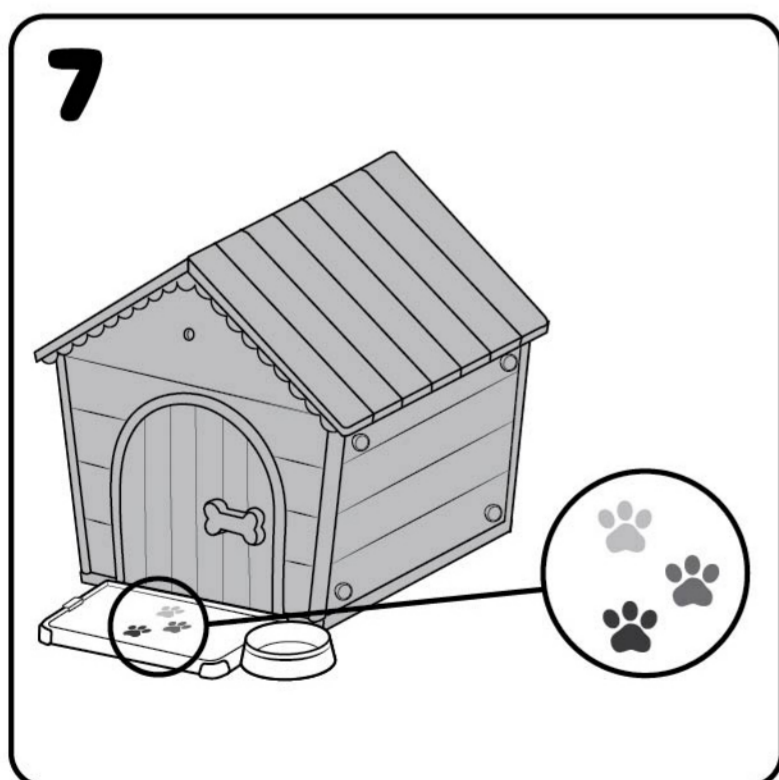
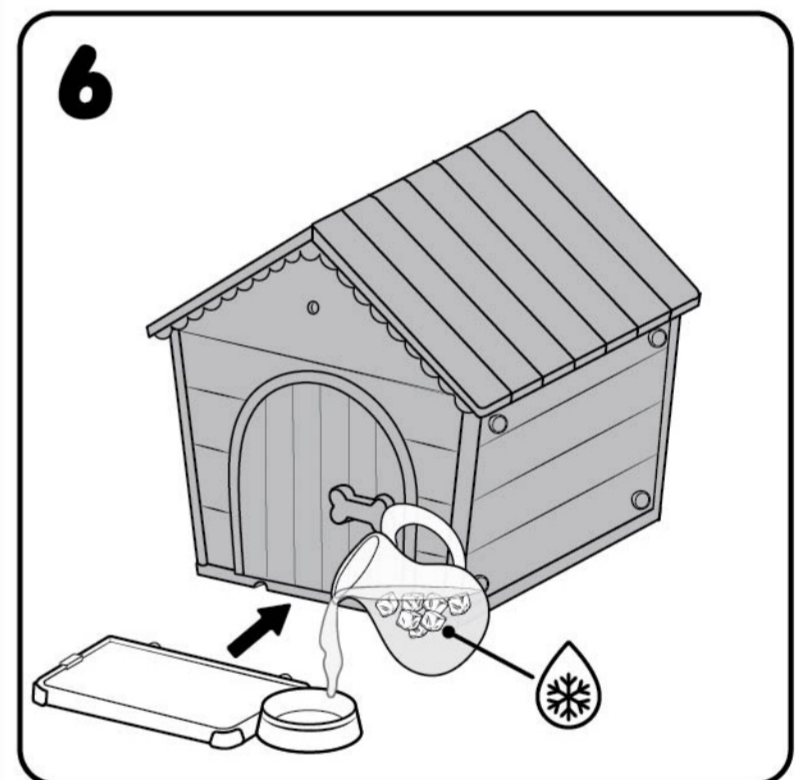
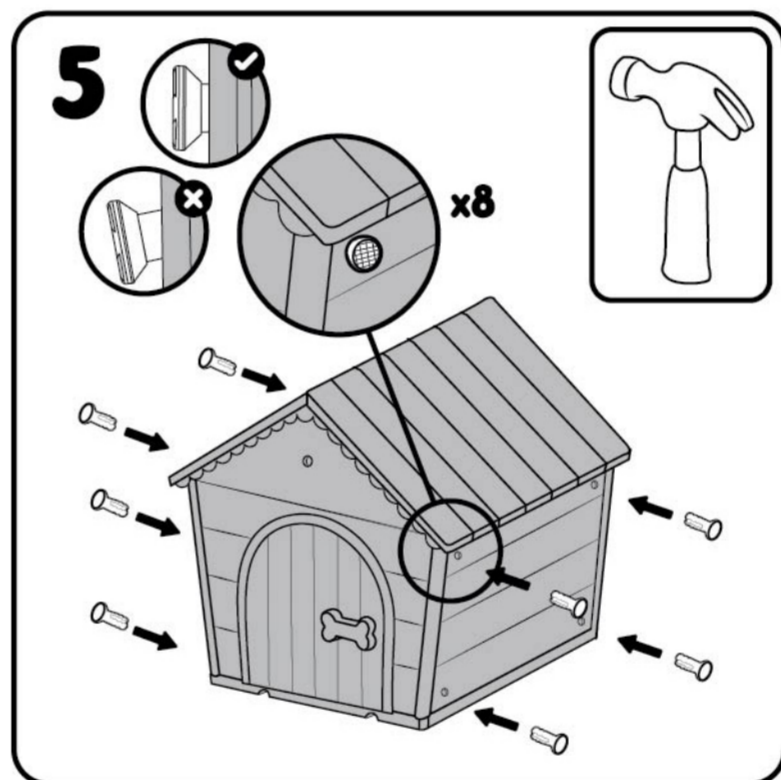
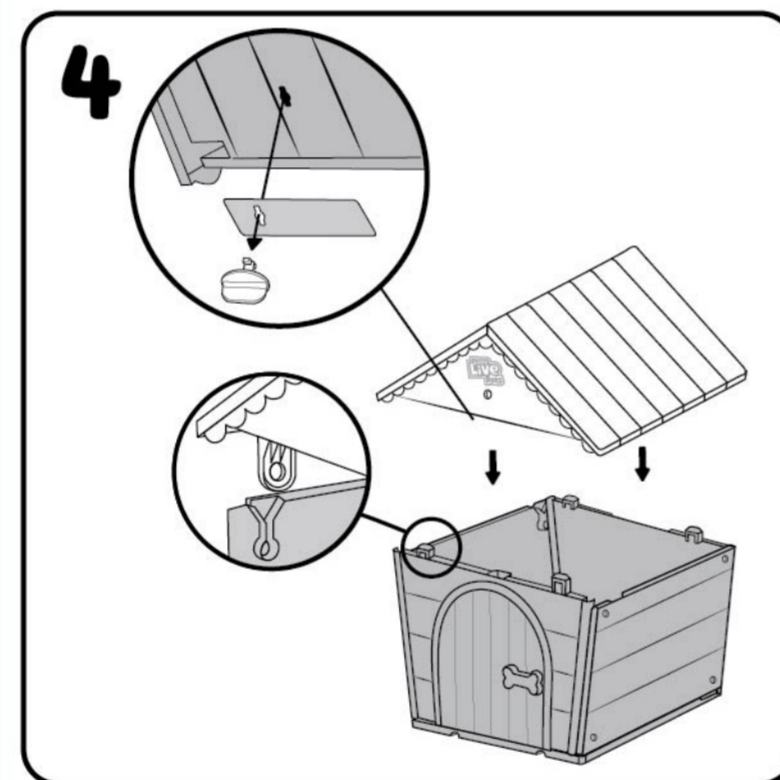
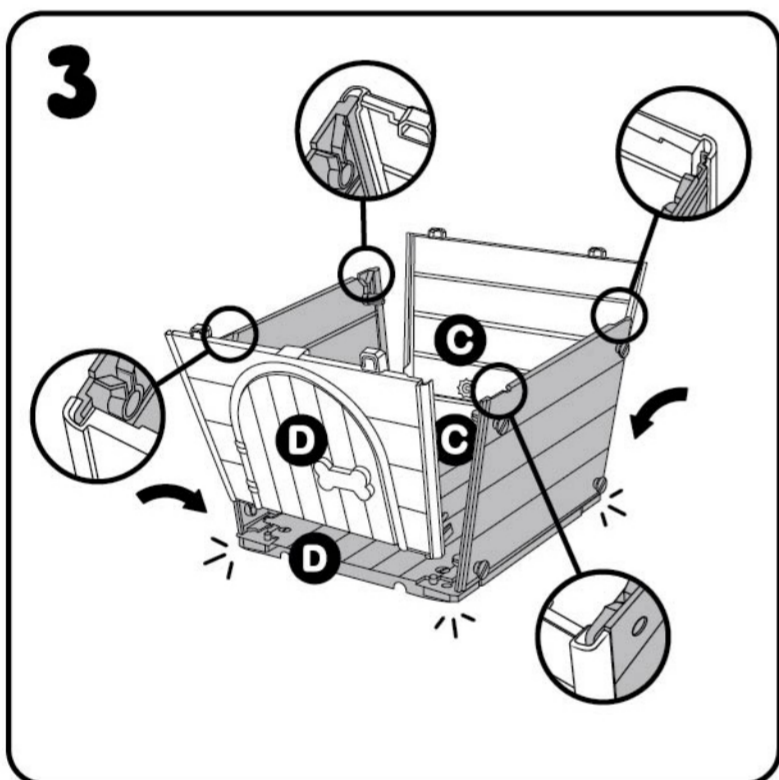
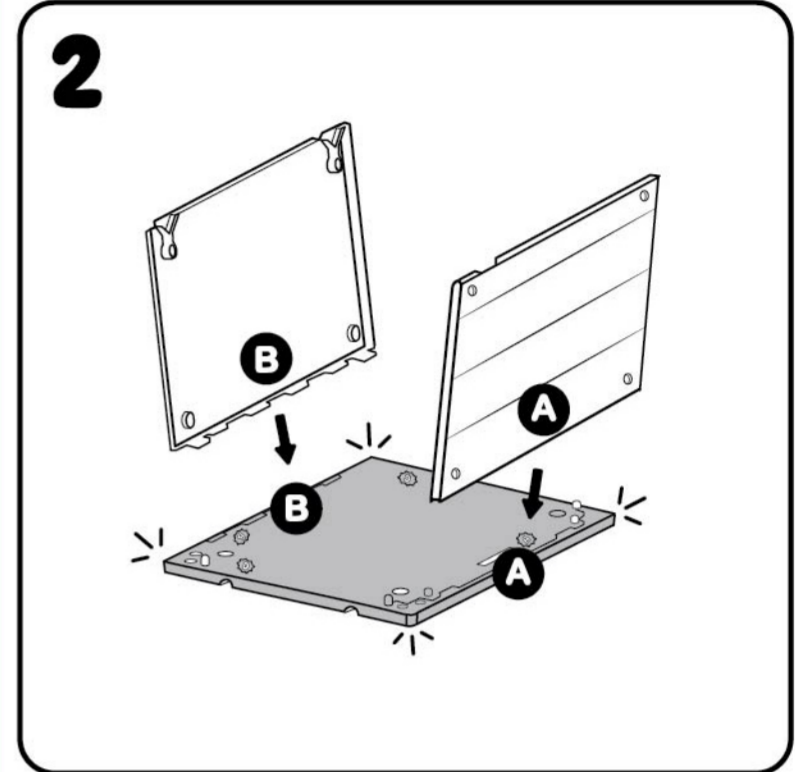
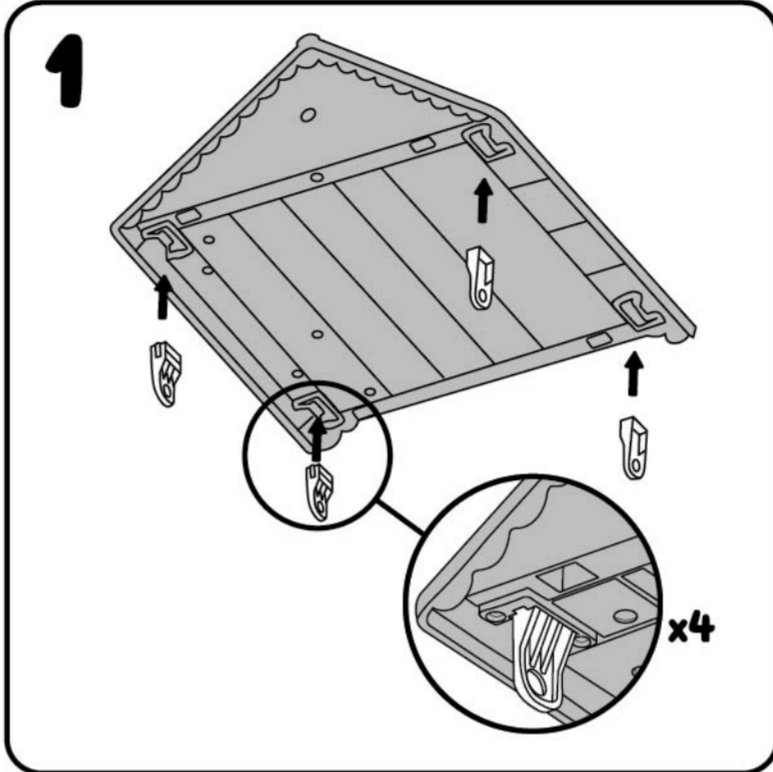
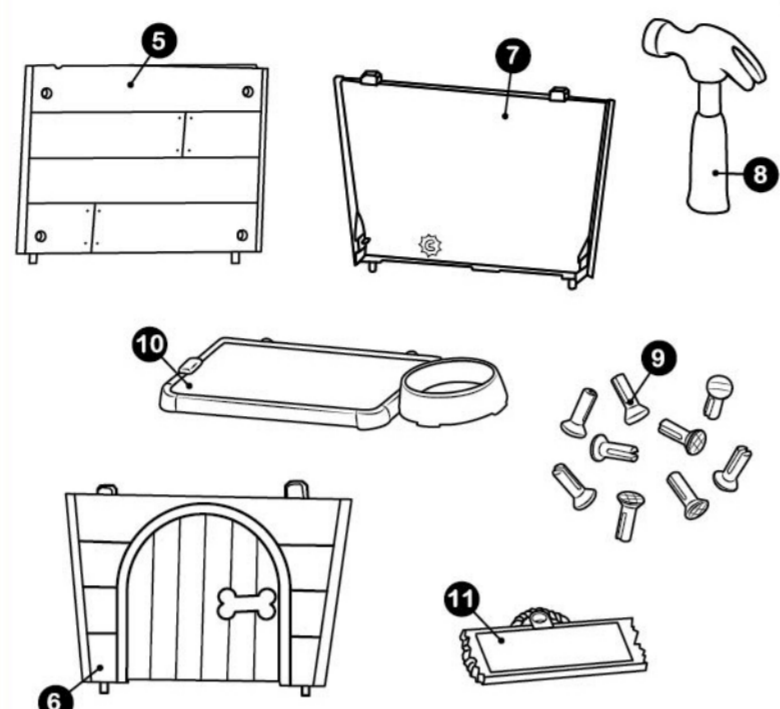
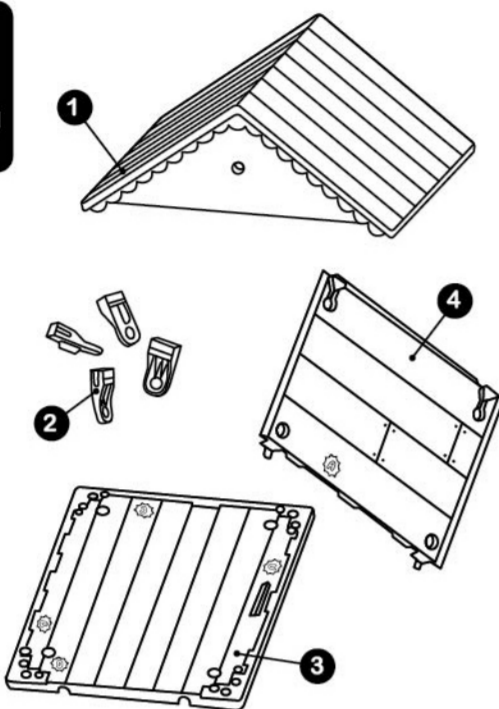




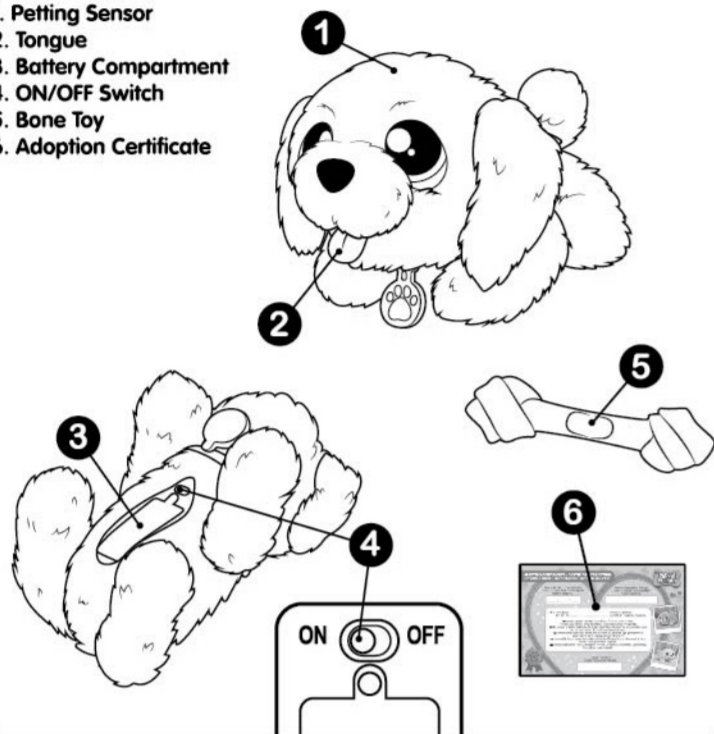


- 1. Roof
- 2. Roof Brackets
- 3. Base
- 4. Left Panel
- 5. Right Panel
- 6. Front Panel
- 7. Rear Panel
- 8. Hammer
- 9. Nails
- 10. Welcome Mat & Water Bowl
- 11. Nameplate



## YOUR PUPPY

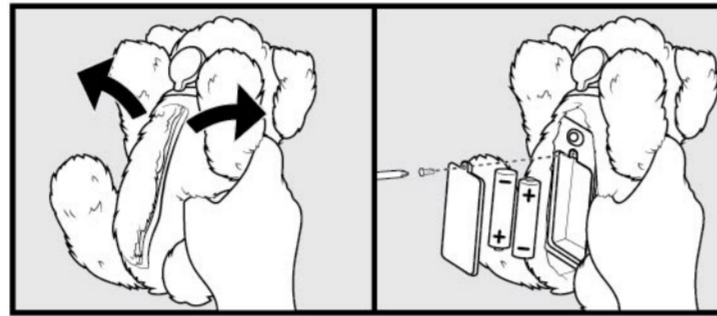
1. Petting Sensor
2. Tongue
3. Battery Compartment
4. ON/OFF Switch
5. Bone Toy
6. Adoption Certificate



## BATTERIES

2x AA 1.5V  
 TEMPORARY HEAVY DUTY BATTERIES INCLUDED. REPLACEMENT BATTERIES NOT INCLUDED, works best with fresh batteries.  
 Replace with 2x AA batteries. Alkaline batteries recommended. Cross head screwdriver (not included) needed to replace batteries.

- Batteries should be replaced by an adult and inserted observing correct polarity.
- Always check to ensure the compartment lid is correctly sealed and secured before giving the toy to the child.
- Non-rechargeable batteries are not to be recharged.
- Rechargeable batteries are to be removed from the toy before being charged.
- Rechargeable batteries are only to be charged under adult supervision.
- Remove exhausted batteries from product.
- The supply terminals are not to be short-circuited.
- Remove batteries from product before long-term storage.
- Batteries should be recycled or disposed of as per state and local guidelines.
- Do not dispose of batteries in fire.
- Different types of batteries or new and used batteries are not to be mixed.



## PLAYING WITH YOUR PUPPY

Open the door of Playset to find your new Puppy and care for it!

- Petting**  
 Pet your Puppy on the head



**TIP:** Pet while the Bone Toy is in its mouth for more reactions!

- Playing with Bone**  
 Gently push the Bone Toy in your Puppy's mouth (on top of tongue) and it will snap into place. Your Puppy will happily chew on its toy.



- Licking**  
 Push down on Puppy's tongue quickly and it'll lick you!

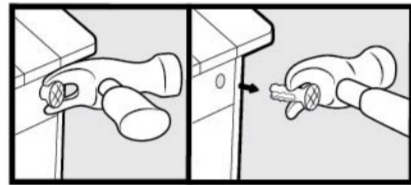


- Sleeping**  
 If you don't interact with your Puppy after some time, it will beg for attention.



## BUILD THE HOUSE PLAYSET AGAIN

You can disassemble your House so you can build it again later.

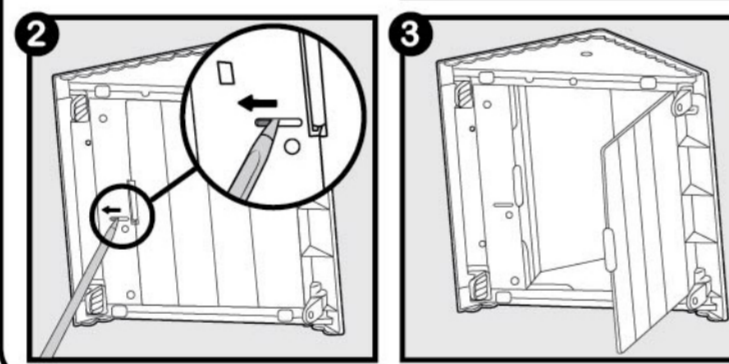
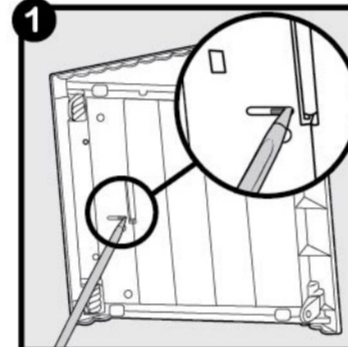


1. Remove the Nameplate and all Nails.
2. Take the Roof off.
3. Take the Front and Rear panels out.
4. Remove the Left and Right panels.

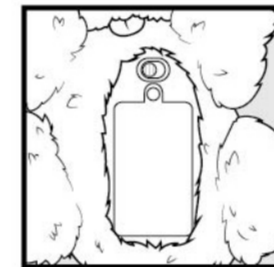
## MANUALLY OPEN PUPPY TRAPDOOR

If Trapdoor in Roof is closed, you can open it manually without building the House.

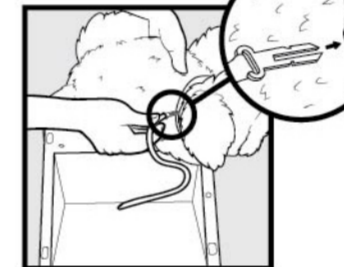
Carefully use the tip of a pen and insert it into the slot on the bottom of the Roof. Then, simply slide the pen along the track to release the Trapdoor.



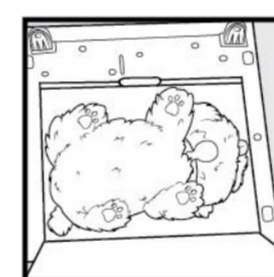
## RELOADING PUPPY FOR REPEAT PLAY



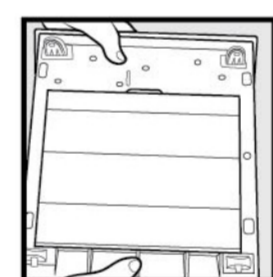
Ensure Puppy switch is in the 'ON' position.



Push tether component into slot on collar.



Place Puppy inside roof facing forward.

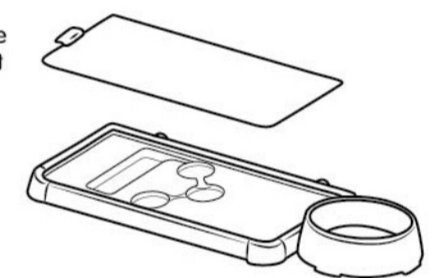


Close the Trapdoor until it clicks into place.

## CLEANING WELCOME MAT & WATER BOWL

When finished playing, always be sure to remove the water from the Welcome Mat and Water Bowl.

Simply slide the Welcome Mat away from the House playset, remove the Cover, and empty all remaining water into a sink.



Then, dry the inside areas of the Welcome Mat, Water Bowl, and underside of the Welcome Mat Cover with a dry cloth.



\*\*Do not pour water into your Puppy's mouth or submerge Puppy in water.

## TROUBLESHOOTING

- House panels are not fitting together.**
- Make sure you are installing correct panels into corresponding spots on House base.
  - Line up the letter of each panel with the corresponding letter shown on the House base (A, B, C, and D).
  - Ensure panels are being installed in the correct order follow the 'BUILDING THE HOUSE' section of this instruction manual.
- I lost my Hammer or Nails.**
- You can use your fingers to push the nail in and pull them out if you've lost your hammer.
  - Extra Nails are included in this set in case you lose some.
- Nothing happens to Welcome Mat when I pour water into Water Bowl.**
- Make sure you are using cold water. Add ice to water before pouring into Water Bowl.
  - Empty any remaining water from the Water Bowl/Welcome Mat, and re-fill using cold water from tap or refrigerator.
- Paw Prints are revealing before I pour water into Water Bowl**
- Paint triggers at approximately 70° F (21° C), if ambient temperature is lower than this, the paws will be seen. Move to a warmer room or indoors if possible.
- Puppy is not being revealed after House is fully assembled.**
- Make sure the Front Door is closed. Puppy will not be revealed if Front Door is open.
  - Ensure Roof is placed correctly onto House panels. Puppy will not be revealed if the Roof is not on the House. Push the nameplate & nail into the house firmly.
  - Ensure Puppy has been placed inside Roof section before assembly.
  - Make sure the circular lock on the underside of the Roof is removed before playing.
- Function does not match instructions / Puppy is not making sounds.**
- Always ensure switch inside Puppy's belly is in 'ON' position, not the 'OFF' position.
  - Batteries may be low. Low batteries may not allow full function.
  - Insert fresh batteries as described in the 'BATTERIES' section of this instruction manual.
  - Always ensure batteries are inserted in correct polarity (+/-).
- Petting Puppy does not yield animations or sounds.**
- Ensure you are contacting on the top of its head (see 'PETTING SENSOR' location in the diagram in this instruction manual).
  - Actively removing or inserting the Bone Toy at the same time as petting may result in petting sounds being overridden.
  - Using your whole palm (for greater contact area) will increase chances of sensor activation.
- I lost my Bone Toy accessory.**
- You can use your finger to push the puppy's tongue to trigger it to play with you.
  - Short press for licking reaction, long press to replicate Bone Toy play reactions.
- Short Battery Life**
- Battery life can be prolonged by either switching off Puppy when not in use or inserting Roof Tether into Collar (when keeping Puppy inside Roof).

- Keeping your Puppy clean.**
- After repeated play, your Puppy may develop some dirt/ marks on its soft fabric surface. Gently brush with a clean cloth or soft brush and wipe off dirt immediately.
  - Do not use water, chemicals, or detergents.
- Warning!**
- Do not submerge or pour water on your Puppy or into its mouth. Do not place any part of Puppy in filled water bowl. This could cause of damage and loss of function.
  - Do not leave your Puppy outside or exposed to weather conditions.
  - Do not leave water in Welcome Mat when not in use.
  - Do not attempt to place larger toys/ items inside the roof cavity of Playset. Doing so may jam and/or damage the unit.
  - Only open the Trapdoor as described in this manual. Using leverage by another means (e.g.: screwdriver, cutlery) may compromise the mechanism and affect repeatability of play.

## FCC Statement

This device complies with part 15 of the FCC rules. Operation is subject to the following two conditions: (1) This device may not cause harmful interference, and (2) this device must accept any interference received, including interference that may cause undesired operation.

**CAUTION:** Changes or modifications not expressly approved by the party responsible for compliance could void the user's authority to operate the equipment.

**NOTE:** This equipment has been tested and found to comply with the limits for a Class B digital device, pursuant to Part 15 of the FCC Rules. These limits are designed to provide reasonable protection against harmful interference in a residential installation. This equipment generates, uses and can radiate radio frequency energy and, if not installed and used in accordance with the instructions, may cause harmful interference to radio communications. However, there is no guarantee that interference will not occur in a particular installation. If this equipment does cause harmful interference to radio or television reception, which can be determined by turning the equipment off and on, the user is encouraged to try to correct the interference by one or more of the following measures:

- Reorient or relocate the receiving antenna.
- Increase the separation between the equipment and receiver.
- Connect the equipment into an outlet on a circuit different from that to which the receiver is connected.
- Consult the dealer or experienced radio/TV technician for help.

CAN ICES-00X (Y) / NMB-00X (Y)

- WARNING:** CHOKING HAZARD - SMALL PARTS. NOT SUITABLE FOR CHILDREN UNDER 3 YEARS.
- CAUTION:** DO NOT USE WITH LIVE ANIMALS. TOY DOG-BONE ACCESSORY NOT INTENDED TO BE USED WITH LIVE PETS. INTERNAL ELECTRONICS, SURFACE WASH ONLY.
- IMPORTANT:** READ ALL INSTRUCTIONS BEFORE USING THIS TOY. CLEAN AND DRY TOY BEFORE STORAGE. RETAIN PACKAGING DETAILS FOR FUTURE REFERENCE. COLORS AND CONTENTS MAY VARY. RETAIN INSTRUCTIONS FOR FUTURE REFERENCE. FOR BEST COLOR CHANGE EFFECT USE ICE WATER (34-50°F/1-10°C).
- PLUSH TOY COMPLIES WITH THE PHYSICAL SAFETY REQUIREMENTS OF THE CCPSA, ASTM F963 AND EN71 FOR AGES 2+.
- PLUSH TOY CONTENTS: PLOYURETHENE FOAM, POLYESTER FIBER. ALL NEW MATERIAL.

[WWW.LITTLELIVEPETS.COM](http://WWW.LITTLELIVEPETS.COM)



Help the environment by disposing of your product and batteries responsibly. The wheeled bin symbols indicate that the product and batteries must not be disposed of in the domestic waste, as they contain substances which can be damaging to the environment and health. Please use designated collection points or recycling facilities when disposing of the item or batteries. More information can be found on: <http://www.recycle-more.co.uk> [www.recyclenow.com](http://www.recyclenow.com)



©2022 The Moose Group

**Little Live Pets** my Puppy's #1 me!

**Easy BUILD!**

**5+** **INSTRUCTION BOOKLET**